

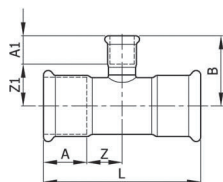
- Отоплителни и тръбни системи
- Стоманени тръби и елементи



Тройник редукция тип C41

Приложение

- Отоплителни и климатични системи затворен тип



Размери																
	Ød - Ød1 - Ød [mm]	L [mm]	B [mm]	Z [mm]	Z1 [mm]	A [mm]	W [g]		Ød - Ød1 - Ød [mm]	L [mm]	B [mm]	Z [mm]	Z1 [mm]	A [mm]	W [g]	
C41BC	15.0-12.0-15.0	74	33	16	15	21	63	C41F	54.0-28.0-54.0	142	59	34	35	37	339	
C41BD	18.0-12.0-18.0	80	34	19	16	21	74	C41GJ	54.0-35.0-54.0	142	64	34	37	37	350	
C41CD	18.0-15.0-18.0	80	35	19	14	21	78	C41HJ	54.0-42.0-54.0	142	68	34	36	37	378	
C41BE	22.0-12.0-22.0	82	36	18	18	23	94	C41EK	76.1-22.0-76.1	232	68	61	45	55	942	
C41CE	22.0-15.0-22.0	82	40	18	19	23	98	C41FK	76.1-28.0-76.1	232	71	61	47	55	956	
C41DE	22.0-18.0-22.0	82	40	18	19	23	100	C41GK	76.1-35.0-76.1	232	75	61	48	55	968	
C41CF	28.0-15.0-28.0	92	42	22	21	24	126	C41HK	76.1-42.0-76.1	232	79	61	47	55	981	
C41DF	28.0-18.0-28.0	92	43	22	22	24	128	C41JK	76.1-54.0-76.1	232	80	61	43	55	1050	
C41FE	28.0-22.0-28.0	92	46	22	23	24	135	C41EL	88.9-22.0-88.9	262	76	68	53	63	1256	
C41CG	35.0-15.0-35.0	102	45	24	24	27	159	C41FL	88.9-28.0-88.9	262	75.5	68	51.5	63	1244	
C41DG	35.0-18.0-35.0	102	45	24	24	27	160	C41GL	88.9-35.0-88.9	262	83	68	56.5	63	1267	
C41EG	35.0-22.0-35.0	102	48	24	25	27	169	C41HL	88.9-42.0-88.9	262	85	68	53	63	1271	
C41FG	35.0-28.0-35.0	102	50	24	25	27	178	C41JL	88.9-54.0-88.9	262	92.5	68	55.5	63	1297	
C41CH	42.0-15.0-42.0	118	52	27	31	32	224	C41KL	88.9-76.1-88.9	262	128	68	73	63	1500	
C41DH	42.0-18.0-42.0	118	52	27	31	32	228	C41EM	108.0-22.0-108.0	312	85	79	62	77	1838	
C41EH	42.0-22.0-42.0	118	54	27	31	32	233	C41FM	108.0-28.0-108.0	312	87.5	79	63.5	77	1939	
C41FH	42.0-28.0-42.0	118	53	27	29	32	239	C41GM	108.0-35.0-108.0	312	93.5	79	66	77	1955	
C41GH	42.0-35.0-42.0	118	57	27	30	32	254	C41HM	108.0-42.0-108.0	312	96	79	64	77	1886	
C41CJ	54.0-15.0-54.0	142	54	34	33	37	349	C41JM	108.0-54.0-108.0	312	102	79	65	77	1967	
C41DJ	54.0-18.0-54.0	142	54	34	33	37	354	C41KM	108.0-76.1-108.0	312	125	79	70.2	77	2147	
C41EJ	54.0-22.0-54.0	142	56	34	33	37	360	C41LM	108.0-88.9-108.0	312	135	79	72	77	2184	

Забележки

- Ød-Ød1-Ød = диаметри
- W = тегло