



## Центробежен вентилатор за агресивни газове тип VSB

- Центробежен вентилатор за агресивни газове

### Приложение

- Центробежните вентилатори са предназначени за пренасяне на примесен с агресивни газове въздух

### Импелер

Импелерът е изработен от полипропилен (PPs), трудно горим, с насочени напред лопатки, статично и динамично балансиран

### Мотор

- Асинхронен мотор
- Захранване: 230V, 1ph, 50Hz или 400V, 3ph, 50Hz
- Клас на защита: IP55

### Опции

- Едноскоростни или двускоростни мотори
- Стандартно изпълнение - работна температура до 50°C
- Взривоустойчиво изпълнение, съвместимо с директива ATEX94/9CE

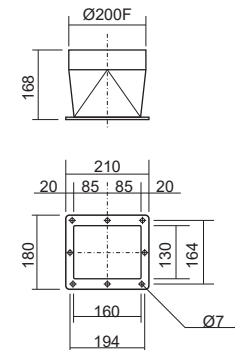
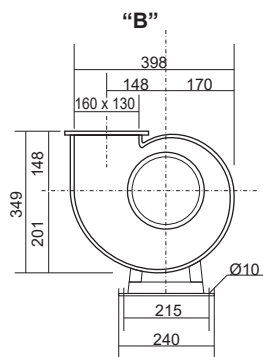
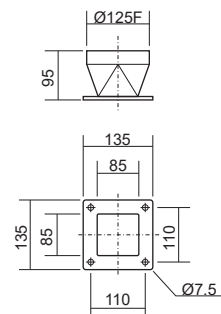
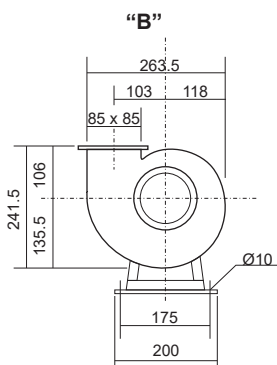
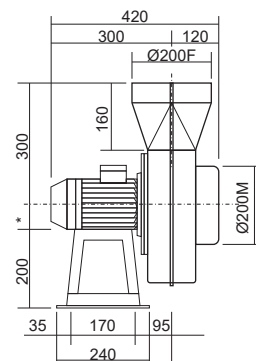
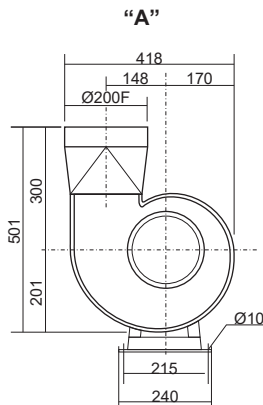
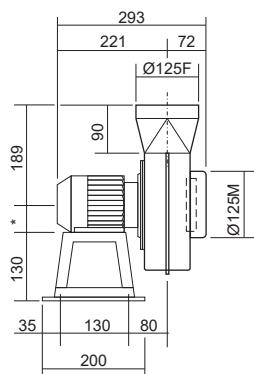
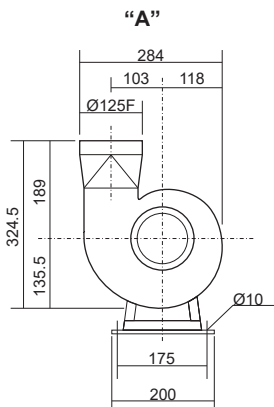
### Проектна спецификация

- Киселинно устойчив центробежен вентилатор от полипропилен (PPS) с изнесен двигател и импелер с напред обърнати лопатки, модел **VSB**

Технически данни										
Модел	Въздушен дебит [m³/h]	Пълен напор Ht [mmH₂O]	Свободен напор Hs [mmH₂O]	Мощност [kW]	Скорост [rpm]	Шумово ниво [dB(A)]	Тегло [kg]	Тегло (Ex-d) [kg]		
VSB 14	100	12	11	0.18	1450	45	4.5	14		
	150	12	10			50				
	250	8	2			56				
	150	46	4	0.18	2900	57				
	200	48	44			60				
	300	48	39			63				
VSB 20	400	36	17	0.18	950	67	8	15		
	500	11	8			45				
	600	25	21			0.18			1450	57
	720	26	20	1.1	2900					70
	950	21	11							13
	1100	95	82							
VSB 23	1300	102	83	0.18	950	57	13	23		
	1600	100	71			60				
	900	49	44			0.55			1450	58
	1100	50	42	15	27					
	1300	49	38							
	1450	48	34	0.18	950	62			15	27
2000	39	13	66							
900	18	14	56							
VSB 24	1500	15	4	0.55	1450	59	13	23		
	1100	40	34			57				
	1450	41	31			61				
	2200	33	10	2.2	2900	65			26	43
	2000	152	133			70				
	2200	162	139			71				
VSB 25	900	21	17	0.18	950	57	13	23		
	1500	17	6			60				
	1100	48	42			0.55				
	1450	48	38	62						
	2200	40	17	66						
	VSB 30	1800	185	170	2.2	2900			70	26
2200		190	167	72						
900		26	24	0.37			950	60		
1800		28	21		25	38				
2500		22	9							
VSB 35		1300	57	53	1.1	1450	65	29	45	
	1800	62	55							
	3000	63	44							
	4000	50	15	0.18	1450	57	13			13

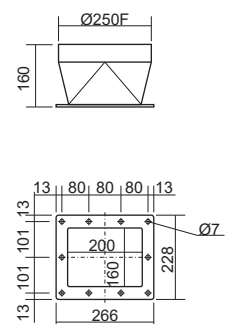
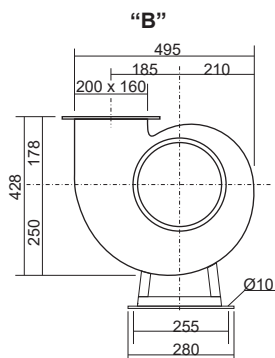
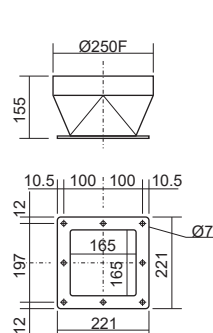
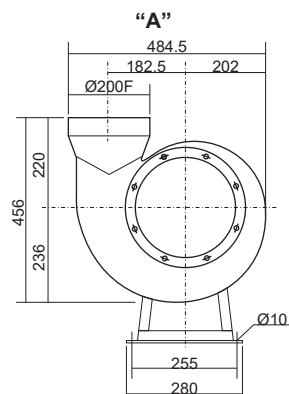
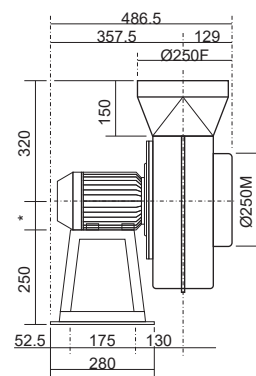
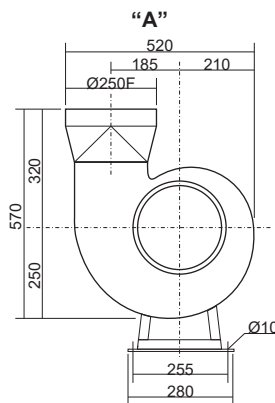
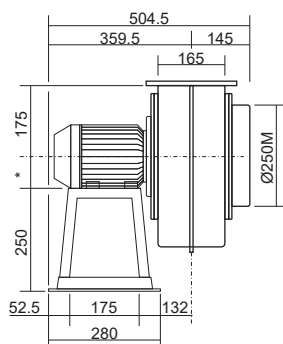
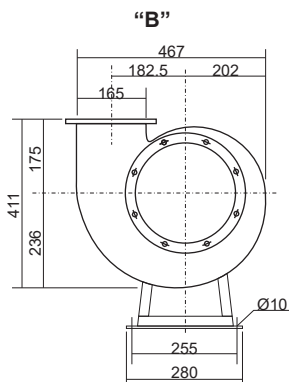
Технически данни												
Модел	Въздушен дебит [m³/h]	Пълен напор Ht [mmH₂O]	Свободен напор Hs [mmH₂O]	Мощност [kW]	Скорост [rpm]	Шумово ниво [dB(A)]	Тегло [kg]	Тегло (Ex-d) [kg]				
VSB 35	2000	37	32	1.1	950	65	42	57				
	3000	40	30									
	4000	34	15									
	3000	83	73	3	1450				70	48	70	
	4000	91	72									
	5000	90	61									
VSB 42	6000	80	40	3	950	72	88	139				
	3500	50	43									
	500	54	39									
	7000	40	11	5.5	1450				78	90	142	
	6000	122	101									
	8000	127	89									
VSB 50	9000	123	76	7.5	1450	78	102	148				
	10000	110	53									
	4000	31	26									1.1
	6500	30	18									
	5000	51	44									
	VSB 50	9000	48	24	2.2				950	59	105	132
7500		117	100									
10000		127	98									
VSB 60		13500	115	60	3	720	56	165	195			
		6500	49	43								
		9000	53	42								
	VSB 60	12000	47	28	4	950				58	194	260
		9000	87	76								
		11000	91	74								
VSB 60		14000	89	63	5.5	1450	62	130	150			
		16000	80	46								
		10000	64	56								
	VSB 60	14000	68	53	7.5	720				56	215	260
		19000	59	32								
		13000	109	96								
VSB 60		16000	116	97	11	950	64	220	275			
		21000	117	84								
		26000	98	47								
	VSB 60	10000	64	56	11	720				59	240	300
		14000	68	53								
		19000	59	32								
VSB 60		13000	109	96	15	950	61	290	390			
		16000	116	97								
		21000	117	84								
	VSB 60	26000	98	47	18.5	950				65	288	390
		10000	64	56								
		14000	68	53								
VSB 60		19000	59	32	67	950	67	318	440			
		13000	109	96								
		16000	116	97								

**Размери**



■ VSB 14

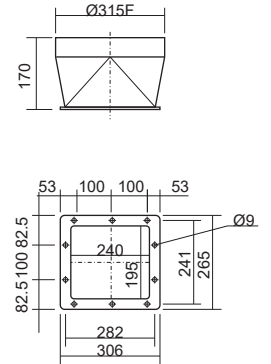
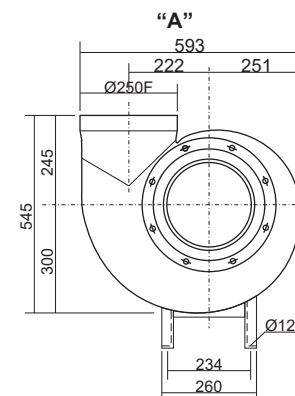
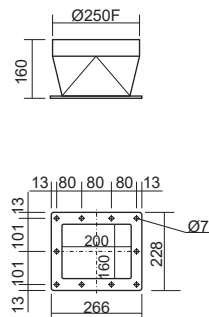
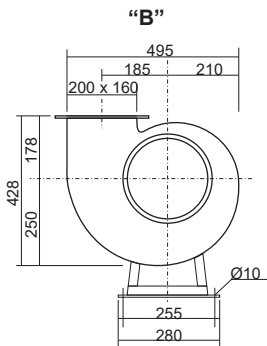
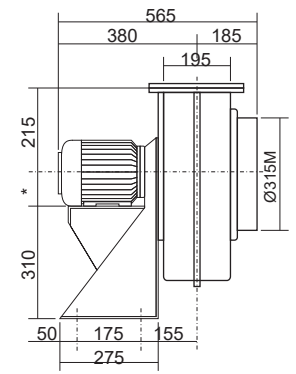
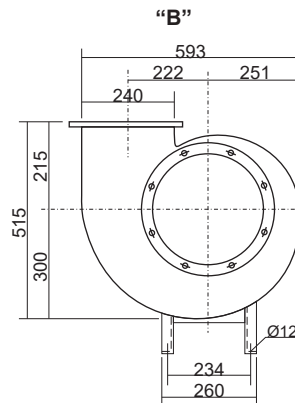
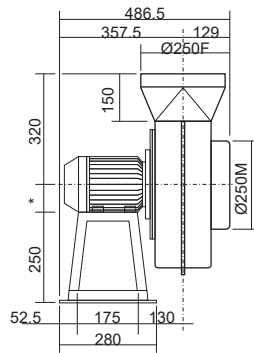
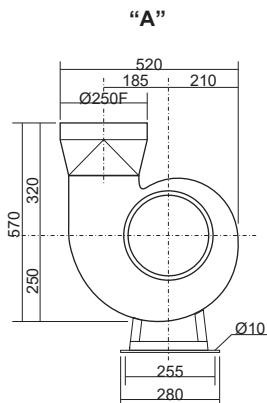
■ VSB 20



■ VSB 23

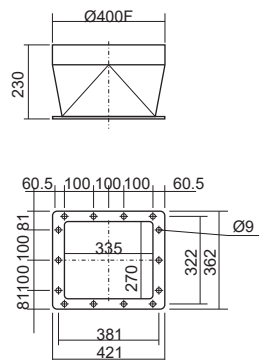
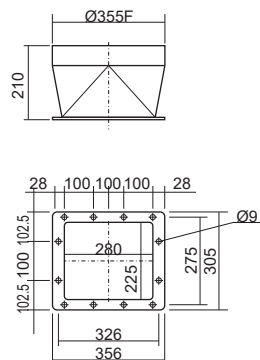
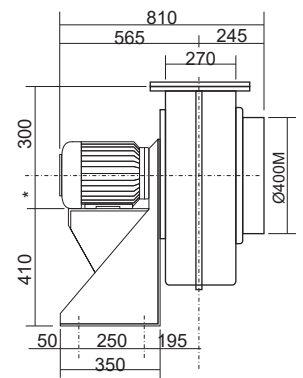
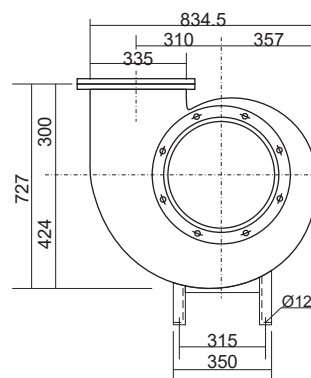
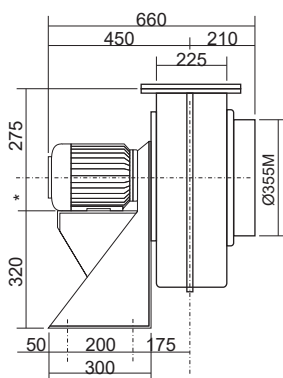
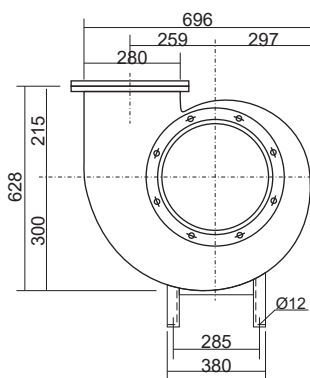
■ VSB 24

**Размери**



■ VSB 25

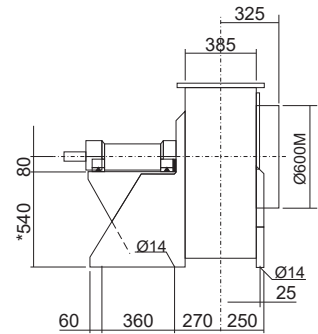
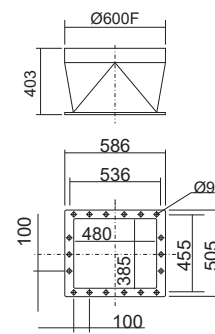
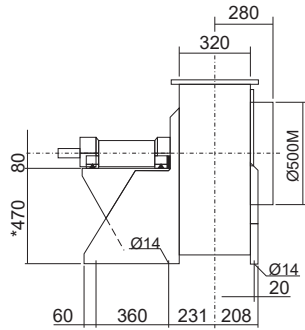
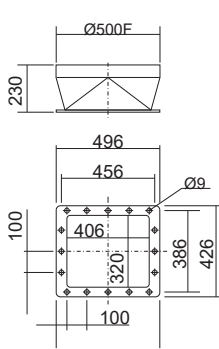
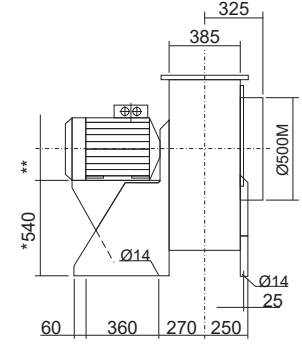
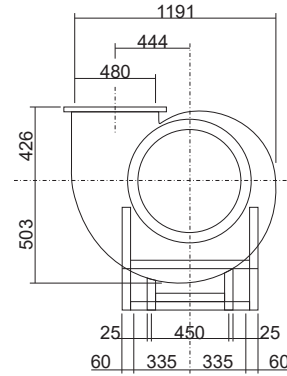
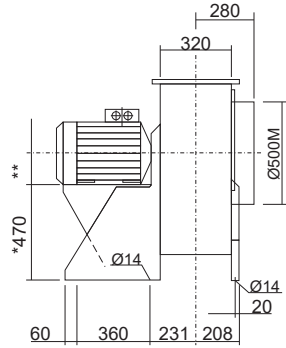
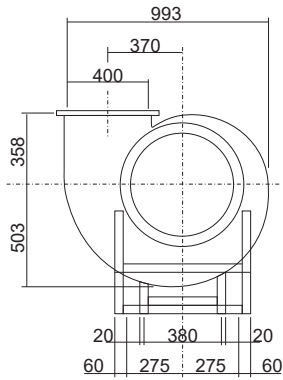
■ VSB 30



■ VSB 35

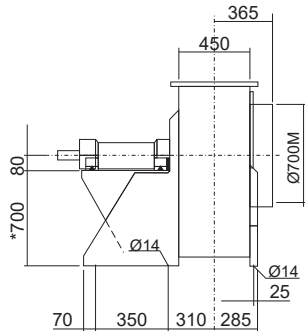
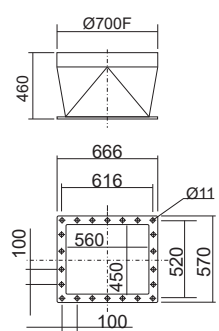
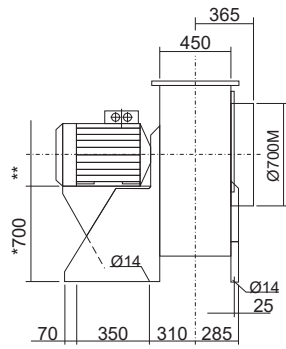
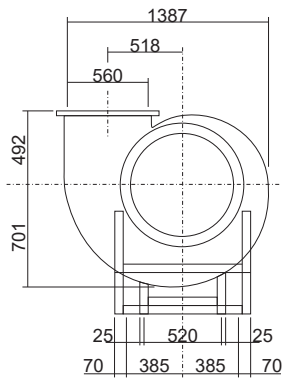
■ VSB 42

**Размери**



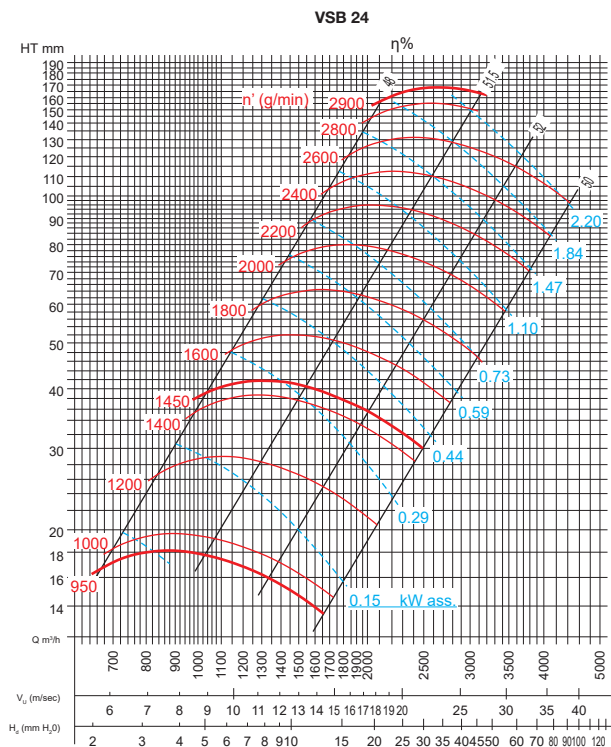
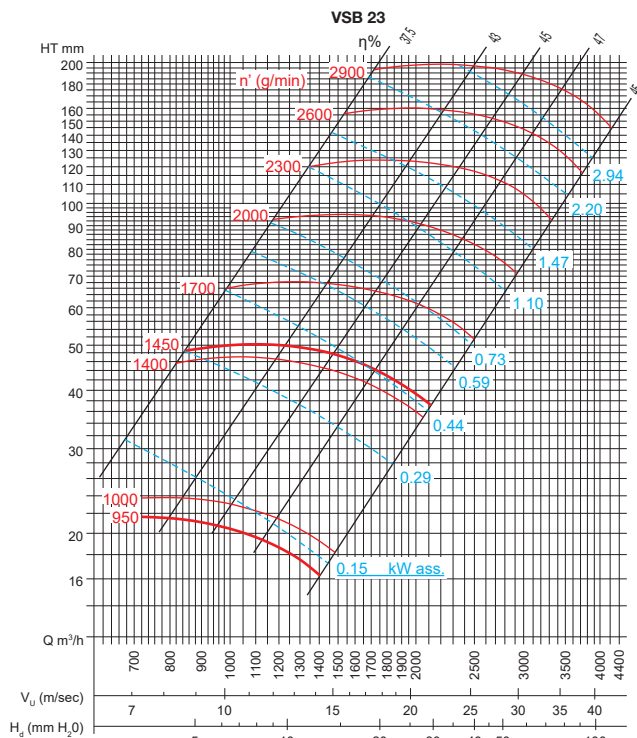
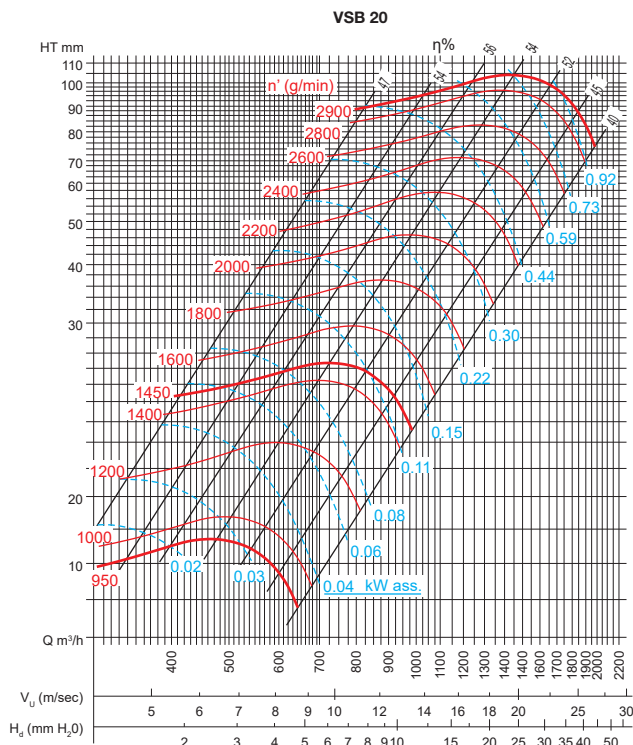
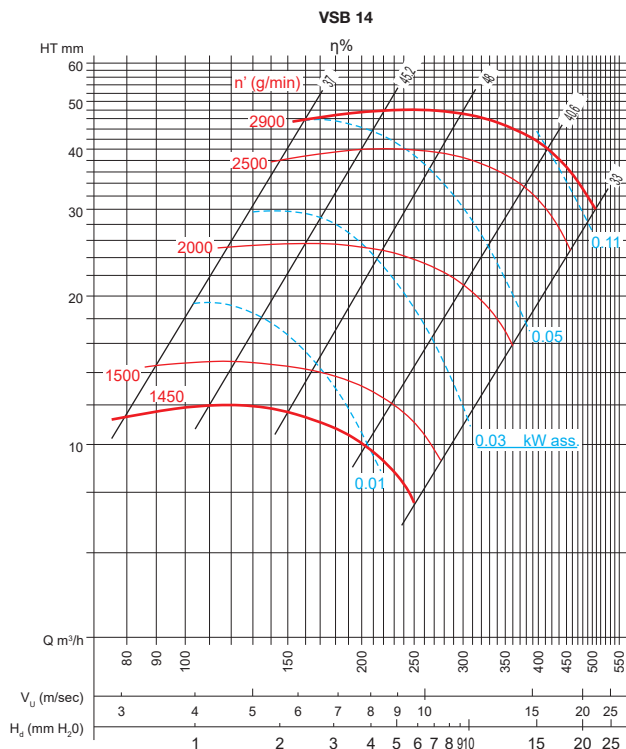
■ VSB 50

■ VSB 60



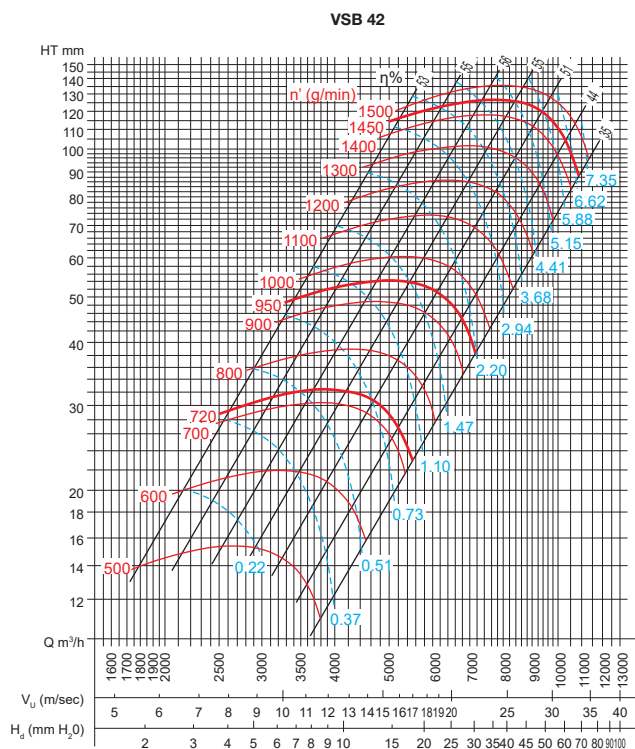
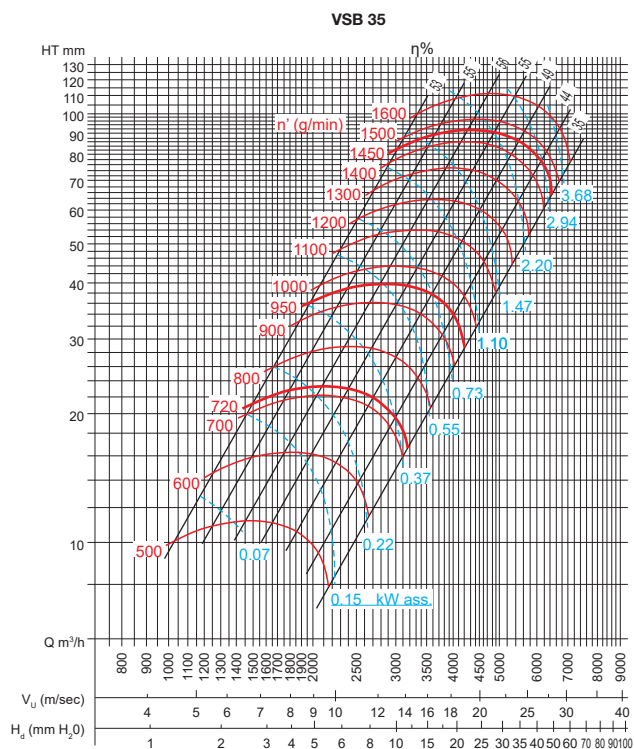
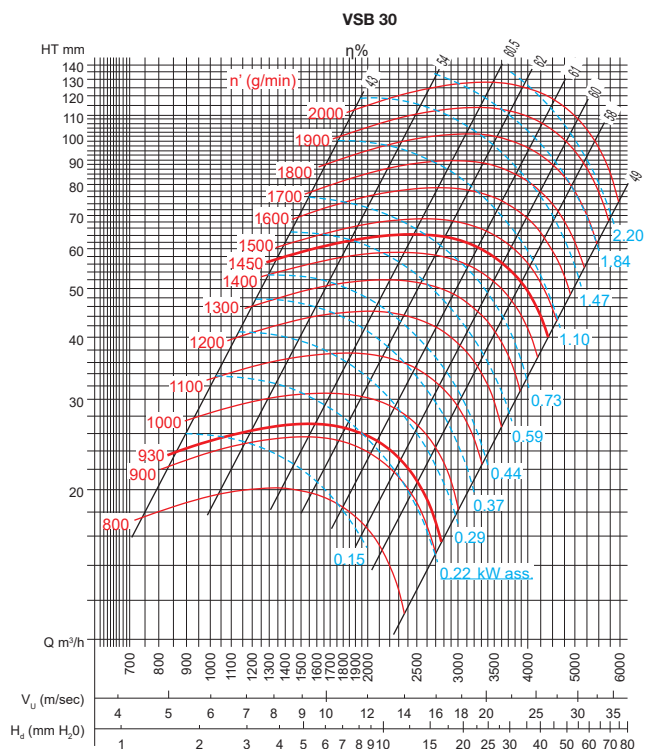
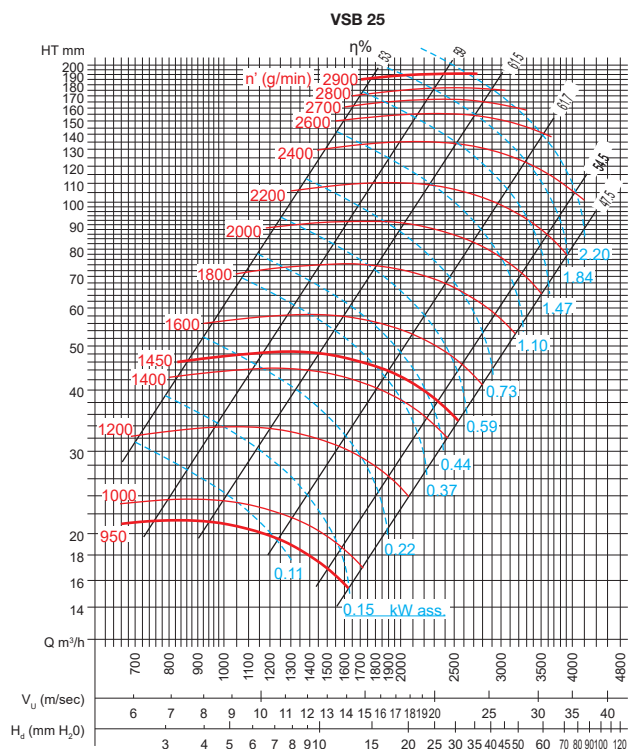
■ VSB 70

**Работни характеристики**



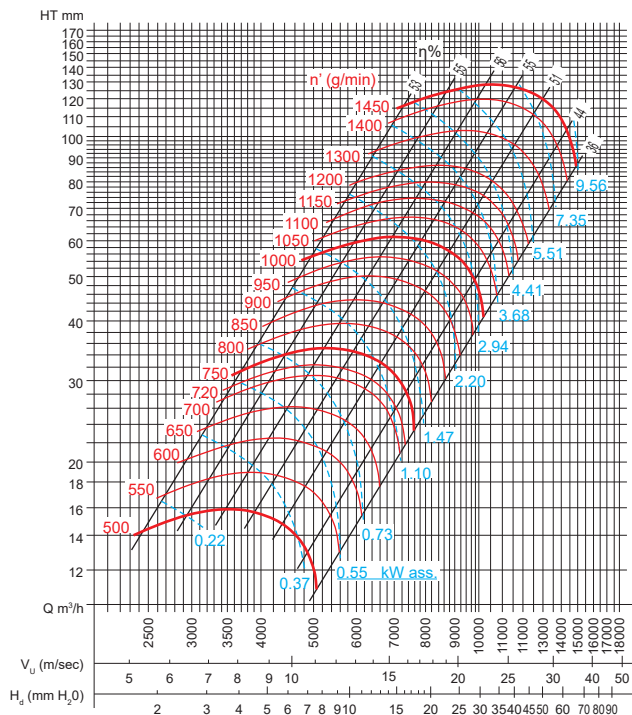


**Работни характеристики**

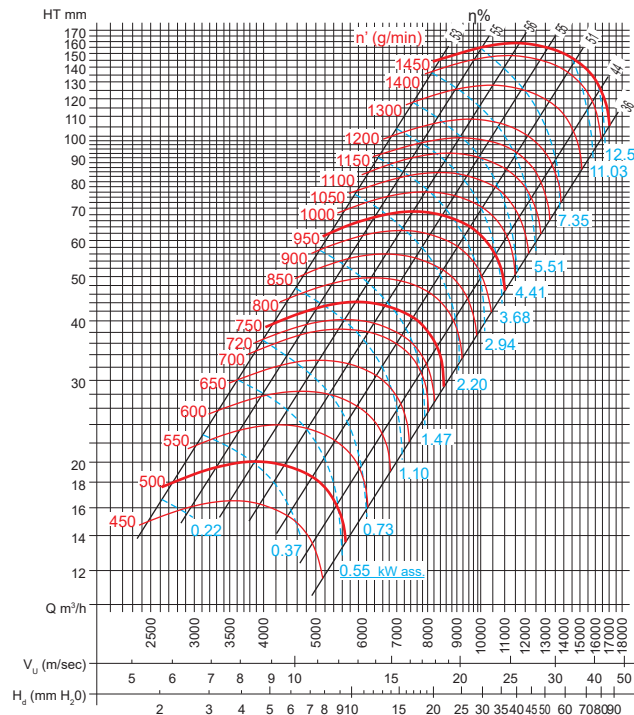


**Работни характеристики**

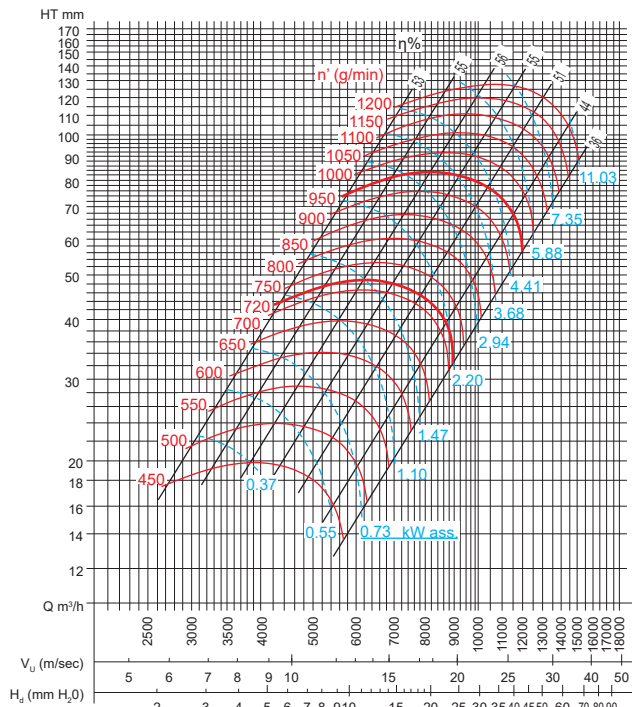
**VSБ 50 (50/135)**



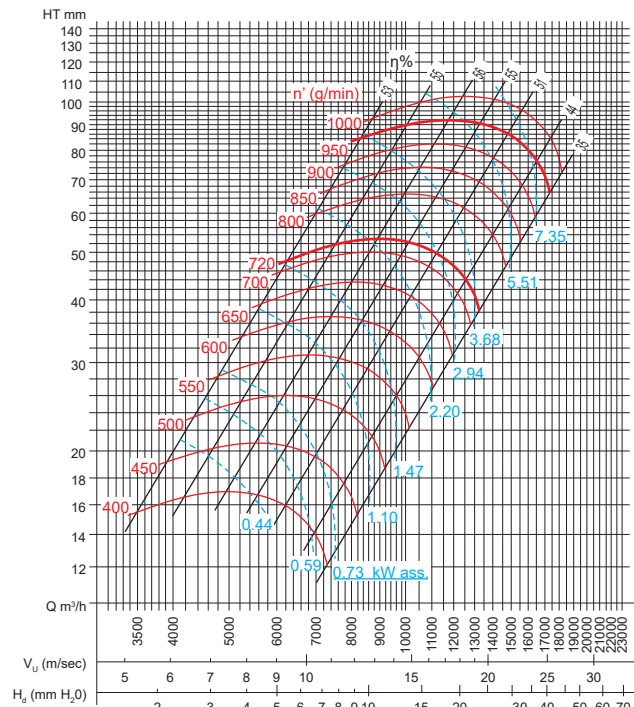
**VSБ 50 (55/145)**



**VSБ 50 (60/160)**

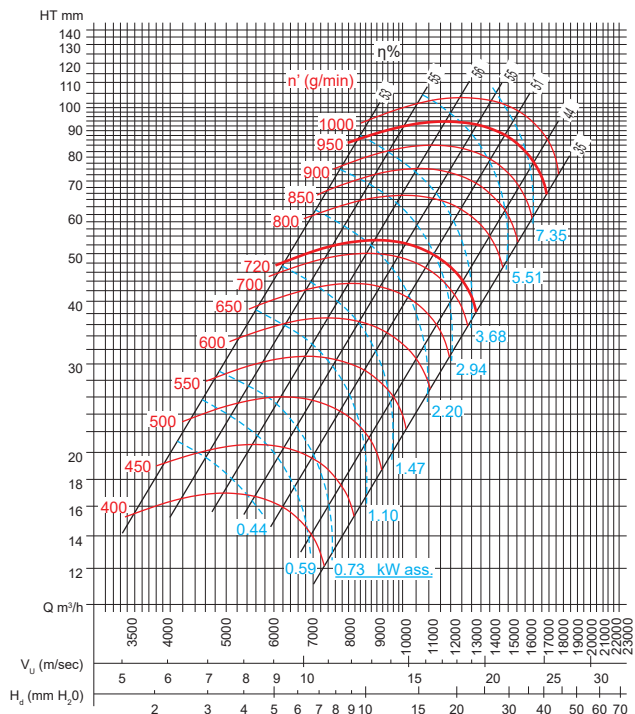


**VSБ 60 (50/135)**

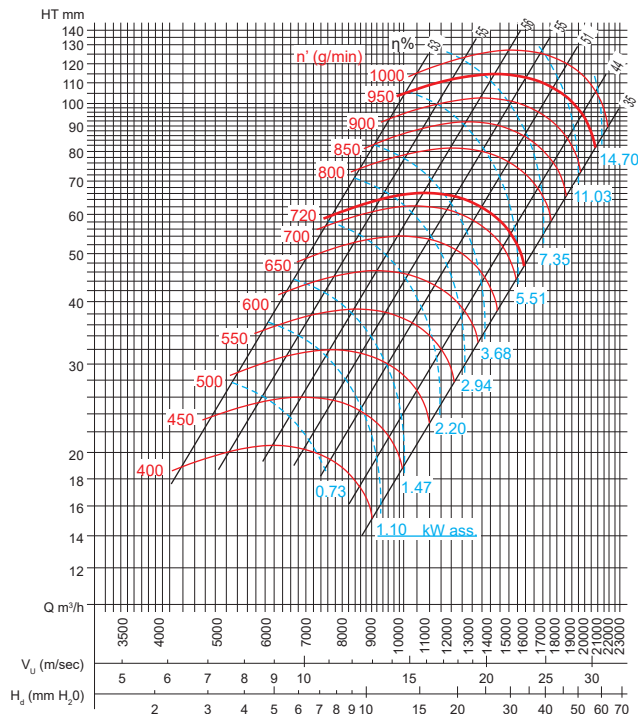


**Работни характеристики**

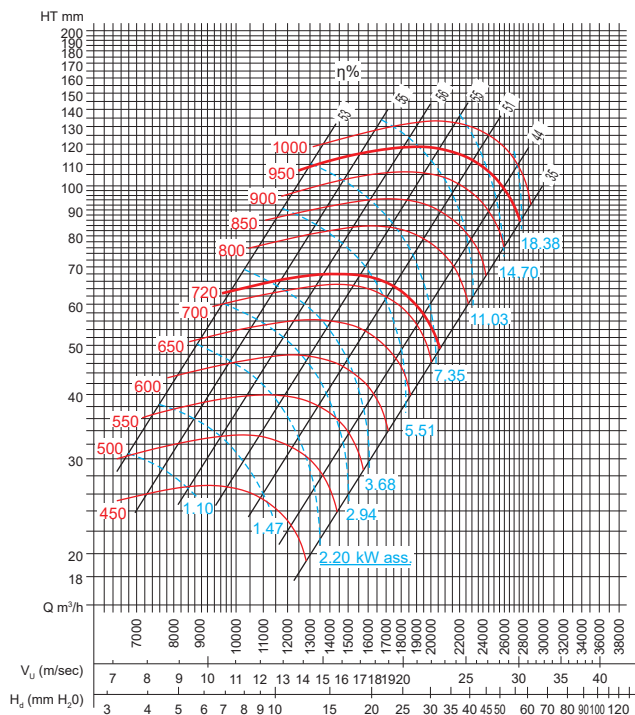
**VSB 60 (55/145)**



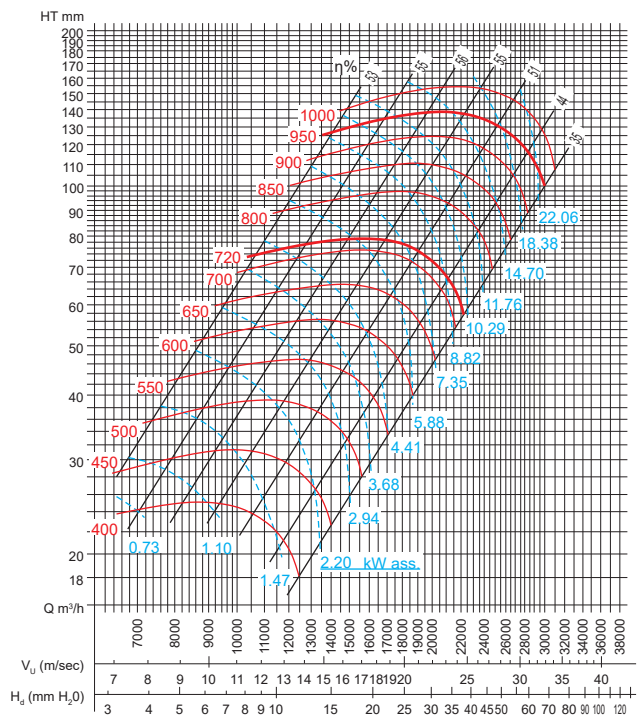
**VSB 60 (60/160)**



**VSB 70 (50/135)**



**VSB 70 (55/145)**



**Работни характеристики**

VSB 70 (60/160)

