

## Центробежни вентилатори с изнесен двигател тип VP

- Центробежен вентилатор с изнесен двигател

### Приложение

- Центробежните вентилатори **VP** са предназначени за пневмотранспорт на чист или замърсен въздух, системи за изсушаване. Частично приложими са в леярни, хранително-вкусовата и химическата промишленост
- Дебит: **100 - 48 000 m<sup>3</sup>/h**
- Свободен напор: **1 400 - 22 800 Pa**

### Конструкция

- Стоманен корпус, базова рама от карбонова стомана
- Имелер с обърнати назад лопатки, динамично и статично балансиран, директно куплиран двигател или двигател с ремъчна предавка
- Асинхронен мотор
- Клас на защита: IP55
- Клас на изолация: F
- Захранване: трифазен 400V 50Hz

### Опции

- Стандартно изпълнение - работна температура до 60°
- Специално изпълнение (SV) - работна температура до 180°C
- Взривозащитено изпълнение, съвместимо с директива ATEX94/9CE

### Проектна спецификация

- Центробежен вентилатор с едностранно засмукване, изнесен двигател и имелер с назад обърнати лопатки, модел **VP**

### Примерна поръчка

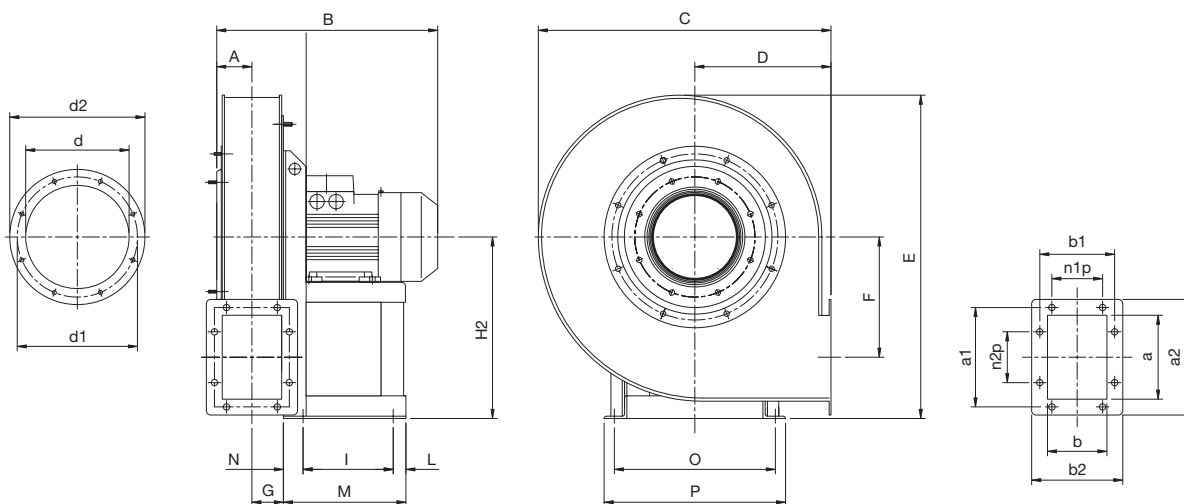
- **VP 451/N /400V**

Пояснение:

**VP 451/N** = вентилатор

**400V** = трифазно захранване

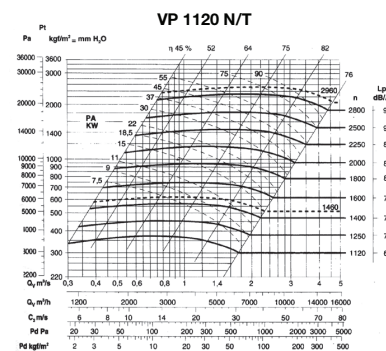
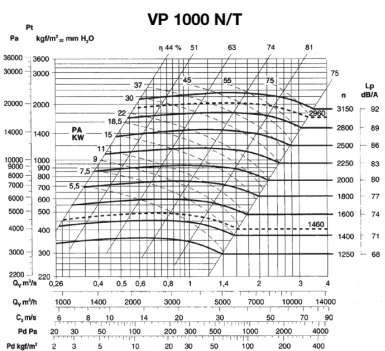
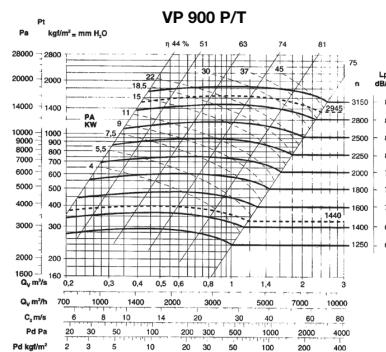
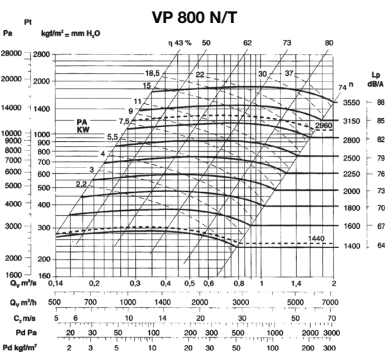
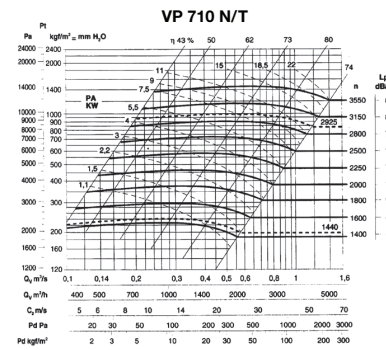
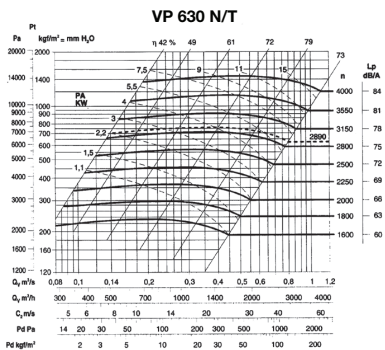
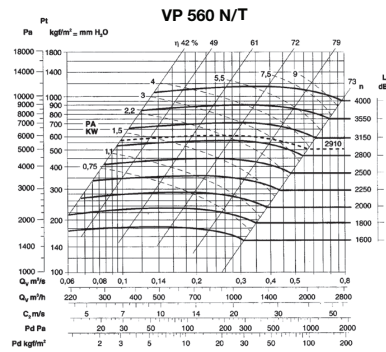
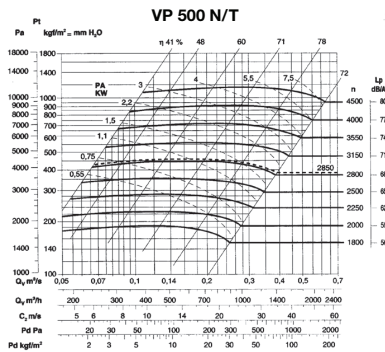
	Мотор	Мощност [kW]	Скорост [min <sup>-1</sup> ]	Звуково ниво [dB(A)]
VP 400/N	80 B2	1,1	2840	72
VP 451/N	80 B2	1,1	2840	73
VP 452/N	90 S2	1,5	2840	74
VP 501/NR	80 B2	1,1	2840	75
VP 502/NR	90 S2	1,5	2840	77
VP 501/N	90 S2	1,5	2840	77
VP 502/N	90 L2	2,2	2850	77
VP 561/NR	90 S2	1,5	2840	79
VP 562/NR	90 L2	2,2	2850	79
VP 563/NR	100 LA2	3	2900	80
VP 561/N	90 L2	2,2	2850	80
VP 562/N	100 LA2	3	2900	81
VP 563/N	112 M2	4	2910	81
VP 631/NR	100 LA2	3	2900	82
VP 632/NR	112 M2	4	2910	82
VP 633/NR	132 SA2	5,5	2890	82
VP 631/N	112 M2	4	2910	83
VP 632/N	132 SA2	5,5	2890	87
VP 633/N	132 SB2	7,5	2890	87
VP 711/NR	132 SB2	7,5	2890	88
VP 712/NR	132 MB2	9,2	2900	88
VP 713/NR	160 MA2	11	2920	89
VP 711/N	132 MB2	9,2	2900	88
VP 712/N	160 MA2	11	2920	89
VP 713/N	160 MB2	15	2925	89
VP 801/NR	160 MA2	11	2920	90
VP 802/NR	160 MB2	15	2925	90
VP 803/NR	160 L2	18,5	2925	90
VP 801/N	160 MB2	15	2925	90
VP 802/N	160 L2	18,5	2925	90
VP 803/N	180 M2	22	2930	92
VP 901/NR	160 L2	18,5	2925	91
VP 902/NR	180 M2	22	2930	93
VP 903/NR	200 LA2	30	2945	93
VP 901/N	180 M2	22	2930	94
VP 902/N	200 LA2	30	2945	94
VP 903/N	200 LB2	37	2945	94
VP 1001/NR	200 LB2	37	2945	95
VP 1002/NR	225 M2	45	2960	95
VP 1003/NR	250 M2	55	2960	95
VP 1001/N	225 M2	45	2960	95
VP 1002/N	250 M2	55	2960	95
VP 1003/N	280 S2	75	2960	95
VP 1121/NR	250 M2	55	2960	97
VP 1122/NR	280 S2	75	2960	97
VP 1123/NR	280 M2	90	2960	97
VP 1121/N	280 S2	75	2960	99
VP 1122/N	280 M2	90	2960	99
VP 1123/N	315 S2	110	2960	99



Размери																				
	A [mm]	B [mm]	C [mm]	D [mm]	E [mm]	F [mm]	G [mm]	H [mm]	H1 [mm]	H2 [mm]	d [mm]	d1 [mm]	d2 [mm]	n° [mm]	ø [mm]	a [mm]	b [mm]	a1 [mm]	b1 [mm]	a2 [mm]
VP 400/N2	47	375	590	280	658	267	42	375	375	375	145	182	215	8	8	105	76	139	110	165
VP 451/N2	52	385	645	300	715	298	47	400	400	400	165	200	235	8	8	117	85	151	119	177
VP 452/N2	52	385	645	300	715	298	47	400	400	400	165	200	235	8	8	117	85	151	119	177
VP 501/NR1	60	360	715	335	795	334	52	450	450	450	185	219	255	8	8	131	95	165	129	191
VP 502/NR1	60	395	715	335	795	334	52	450	450	450	185	219	255	8	8	131	95	165	129	191
VP 501/N2	60	395	715	335	795	334	52	450	450	450	185	219	255	8	8	131	95	165	129	191
VP 502/N2	60	395	715	335	795	334	52	450	450	450	185	219	255	8	8	131	95	165	129	191
VP 561/NR1	65	410	805	375	890	379	59	500	500	500	205	241	275	8	8	146	105	182	139	216
VP 562/NR1	65	410	805	375	890	379	59	500	500	500	205	241	275	8	8	146	105	182	139	216
VP 561/N2	65	410	805	375	890	379	59	500	500	500	205	241	275	8	8	146	105	182	139	216
VP 563/NR1	65	480	805	375	890	379	59	500	500	500	205	241	275	8	8	146	105	182	139	216
VP 562/N2	65	480	805	375	890	379	59	500	500	500	205	241	275	8	8	146	105	182	139	216
VP 563/N2	65	480	805	375	890	379	59	500	500	500	205	241	275	8	8	146	105	182	139	216
VP 631/NR1	71	495	910	425	1000	427	65	560	560	560	228	265	298	8	8	166	117	200	151	236
VP 632/NR1	71	495	910	425	1000	427	65	560	560	560	228	265	298	8	8	166	117	200	151	236
VP 631/N2	71	495	910	425	1000	427	65	560	560	560	228	265	298	8	8	166	117	200	151	236
VP 633/NR1	71	555	910	425	1000	427	65	560	560	560	228	265	298	8	8	166	117	200	151	236
VP 632/N2	71	555	910	425	1000	427	65	560	560	560	228	265	298	8	8	166	117	200	151	236
VP 633/N2	71	555	910	425	1000	427	65	560	560	560	228	265	298	8	8	166	117	200	151	236
	b2 [mm]	n1xp [mm]	n2xp [mm]	n° [mm]	ø [mm]	I [mm]	J [mm]	K [mm]	L [mm]	M [mm]	N [mm]	O [mm]	P [mm]	Q [mm]	R [mm]	S [mm]	T [mm]	U [mm]	ø [mm]	Kg
VP 400/N2	136	-	-	4	10	121	-	-	45	211	45	203	225	-	-	-	-	-	10	48
VP 451/N2	145	-	-	4	10	121	-	-	45	211	45	203	225	-	-	-	-	-	10	57
VP 452/N2	145	-	-	4	10	133	-	-	58	246	55	234	260	-	-	-	-	-	10	63
VP 501/NR1	155	-	1x100	6	10	121	-	-	45	211	45	203	225	-	-	-	-	-	10	62
VP 502/NR1	155	-	1x100	6	10	133	-	-	58	246	55	234	260	-	-	-	-	-	10	65
VP 501/N2	155	-	1x100	6	10	133	-	-	58	246	55	234	260	-	-	-	-	-	10	65
VP 502/N2	155	-	1x100	6	10	133	-	-	58	246	55	234	260	-	-	-	-	-	10	67
VP 561/NR1	175	-	1x112	6	12	133	-	-	58	246	55	234	260	-	-	-	-	-	10	94
VP 562/NR1	175	-	1x112	6	12	133	-	-	58	246	55	234	260	-	-	-	-	-	10	96
VP 561/N2	175	-	1x112	6	12	133	-	-	58	246	55	234	260	-	-	-	-	-	10	98
VP 563/NR1	175	-	1x112	6	12	197	-	-	49	276	30	289	324	-	-	-	-	-	12	102
VP 562/N2	175	-	1x112	6	12	197	-	-	49	276	30	289	324	-	-	-	-	-	12	107
VP 563/N2	175	-	1x112	6	12	197	-	-	49	276	30	289	324	-	-	-	-	-	12	111
VP 631/NR1	187	-	1x112	6	12	197	-	-	49	276	30	289	324	-	-	-	-	-	12	128
VP 632/NR1	187	-	1x112	6	12	197	-	-	49	276	30	289	324	-	-	-	-	-	12	136
VP 631/N2	187	-	1x112	6	12	197	-	-	49	276	30	289	324	-	-	-	-	-	12	136
VP 633/NR1	187	-	1x112	6	12	237	-	-	59	336	40	337	372	-	-	-	-	-	12	147
VP 632/N2	187	-	1x112	6	12	237	-	-	59	336	40	337	372	-	-	-	-	-	12	150
VP 633/N2	187	-	1x112	6	12	237	-	-	59	336	40	337	372	-	-	-	-	-	12	155

	Размери																				
	A [mm]	B [mm]	C [mm]	D [mm]	E [mm]	F [mm]	G [mm]	H [mm]	H1 [mm]	H2 [mm]	d [mm]	d1 [mm]	d2 [mm]	n° [mm]	ø [mm]	a [mm]	b [mm]	a1 [mm]	b1 [mm]	a2 [mm]	
VP 711/NR1	78	570	1015	475	1122	478	72	630	630	630	255	292	325	8	10	185	131	219	165	255	
VP 712/NR1	78	570	1015	475	1122	478	72	630	630	630	255	292	325	8	10	185	131	219	165	255	
VP 711/N2	78	570	1015	475	1122	478	72	630	630	630	255	292	325	8	10	185	131	219	165	255	
VP 713/NR1	78	705	1015	475	1122	478	72	630	630	630	255	292	325	8	10	185	131	219	165	255	
VP 712/N2	78	705	1015	475	1122	478	72	630	630	630	255	292	325	8	10	185	131	219	165	255	
VP713/N2	78	705	1015	475	1122	478	72	630	630	630	255	292	325	8	10	185	131	219	165	255	
VP 801/NR1	87	720	1140	530	1265	539	80	710	710	710	285	332	365	8	10	207	148	241	182	277	
VP 802/NR1	87	720	1140	530	1265	539	80	710	710	710	285	332	365	8	10	207	148	241	182	277	
VP 801/N2	87	720	1140	530	1265	539	80	710	710	710	285	332	365	8	10	207	148	241	182	277	
VP 803/NR1	87	720	1140	530	1265	539	80	710	710	710	285	332	365	8	10	207	148	241	182	277	
VP 802/N2	87	720	1140	530	1265	539	80	710	710	710	285	332	365	8	10	207	148	241	182	277	
VP 803/N2	87	720	1140	530	1265	539	80	710	710	710	285	332	365	8	10	207	148	241	182	277	
VP 901/NR1	95	740	1285	600	1428	608	90	800	800	800	320	366	400	8	10	231	166	265	200	301	
VP 902/NR1	95	740	1285	600	1428	608	90	800	800	800	320	366	400	8	10	231	166	265	200	301	
VP 901/N2	95	740	1285	600	1428	608	90	800	800	800	320	366	400	8	10	231	166	265	200	301	
VP 903/NR1	95	815	1285	600	1428	608	90	800	800	800	320	366	400	8	10	231	166	265	200	301	
VP 902/N2	95	815	1285	600	1428	608	90	800	800	800	320	366	400	8	10	231	166	265	200	301	
VP 903/N2	95	815	1285	600	1428	608	90	800	800	800	320	366	400	8	10	231	166	265	200	301	
VP 1001/NR1	105	835	1430	670	1590	681	100	900	900	900	360	405	440	8	10	258	185	292	219	328	
VP 1002/NR1	105	910	1430	670	1590	681	100	900	900	900	360	405	440	8	10	258	185	292	219	328	
VP 1001/N2	105	910	1430	670	1590	681	100	900	900	900	360	405	440	8	10	258	185	292	219	328	
VP 1003/NR1	105	910	1430	670	1590	681	100	900	900	900	360	405	440	8	10	258	185	292	219	328	
VP 1002/N2	105	910	1430	670	1590	681	100	900	900	900	360	405	440	8	10	258	185	292	219	328	
VP 1003/N2	105	1100	1430	670	1590	681	100	900	900	900	360	405	440	8	10	258	185	292	219	328	
VP 1121/NR1	115	935	1600	750	1770	766	111	1000	1000	1000	405	448	485	12	10	288	205	332	249	368	
VP 1123/NR1	115	1065	1600	750	1770	766	111	1000	1000	1000	405	448	485	12	10	288	205	332	249	368	
VP 1122/N2	115	1065	1600	750	1770	766	111	1000	1000	1000	405	448	485	12	10	288	205	332	249	368	
VP 1121/N2	115	1065	1600	750	1770	766	111	1000	1000	1000	405	448	485	12	10	288	205	332	249	368	
VP 1123/N2	115	1065	1600	750	1770	766	111	1000	1000	1000	405	448	485	12	10	288	205	332	249	368	
	b5 [mm]	n1xø [mm]	n2xø [mm]	n° [mm]	ø [mm]	I [mm]	J [mm]	K [mm]	L [mm]	M [mm]	N [mm]	O [mm]	P [mm]	Q [mm]	R [mm]	S [mm]	T [mm]	U [mm]	V [mm]	ø [mm]	Kg
VP 711/NR1	201	-	1x112	6	12	237	-	-	59	336	40	337	372	-	-	-	-	-	-	12	189
VP 712/NR1	201	-	1x112	6	12	237	-	-	59	336	40	337	372	-	-	-	-	-	-	12	196
VP 711/N2	201	-	1x112	6	12	237	-	-	59	336	40	337	372	-	-	-	-	-	-	12	200
VP 713/NR1	201	-	1x112	6	12	337	-	-	49	436	50	395	440	-	-	-	-	-	-	14	220
VP 712/N2	201	-	1x112	6	12	337	-	-	49	436	50	395	440	-	-	-	-	-	-	14	224
VP713/N2	201	-	1x112	6	12	337	-	-	49	436	50	395	440	-	-	-	-	-	-	14	230
VP 801/NR1	218	1x112	1x112	8	12	337	-	-	49	436	50	395	440	-	-	-	-	-	-	14	261
VP 802/NR1	218	1x112	1x112	8	12	337	-	-	49	436	50	395	440	-	-	-	-	-	-	14	267
VP 801/N2	218	1x112	1x112	8	12	337	-	-	49	436	50	395	440	-	-	-	-	-	-	14	272
VP 803/NR1	218	1x112	1x112	8	12	337	-	-	49	436	50	395	440	-	-	-	-	-	-	14	278
VP 802/N2	218	1x112	1x112	8	12	337	-	-	49	436	50	395	440	-	-	-	-	-	-	14	283
VP 803/N2	218	1x112	1x112	8	12	357	-	-	33	460	70	434	488	-	-	-	-	-	-	17	305
VP 901/NR1	236	1x112	1x112	8	12	337	-	-	49	436	50	395	440	-	-	-	-	-	-	14	400
VP 902/NR1	236	1x112	1x112	8	12	357	-	-	33	460	70	434	488	-	-	-	-	-	-	17	422
VP 901/N2	236	1x112	1x112	8	12	357	-	-	33	460	70	434	488	-	-	-	-	-	-	17	428
VP 903/NR1	236	1x112	1x112	8	12	381	-	-	39	500	80	506	568	-	-	-	-	-	-	19	537
VP 902/N2	236	1x112	1x112	8	12	381	-	-	39	500	80	506	568	-	-	-	-	-	-	19	543
VP 903/N2	236	1x112	1x112	8	12	381	-	-	39	500	80	506	568	-	-	-	-	-	-	19	554
VP 1001/NR1	255	1x112	2x112	10	12	381	-	-	39	500	80	506	568	-	-	-	-	-	-	19	630
VP 1002/NR1	255	1x112	2x112	10	12	421	-	-	39	540	80	556	616	-	-	-	-	-	-	19	674
VP 1001/N2	255	1x112	2x112	10	12	421	-	-	39	540	80	556	616	-	-	-	-	-	-	19	681
VP 1003/NR1	255	1x112	2x112	10	12	501	-	-	39	600	60	604	690	-	-	-	-	-	-	19	746
VP 1002/N2	255	1x112	2x112	10	12	501	-	-	39	600	60	604	690	-	-	-	-	-	-	19	753
VP 1003/N2	255	1x112	2x112	10	12	591	-	-	39	690	60	690	750	-	-	-	-	-	-	21	852
VP 1121/NR1	285	1x125	2x125	10	12	501	-	-	39	600	60	604	690	-	-	-	-	-	-	19	860
VP 1123/NR1	285	1x125	2x125	10	12	591	-	-	39	690	60	690	750	-	-	-	-	-	-	21	992
VP 1122/N2	285	1x125	2x125	10	12	591	-	-	39	690	60	690	750	-	-	-	-	-	-	21	999
VP 1122/NR1	285	1x125	2x125	10	12	591	-	-	39	690	60	690	750	-	-	-	-	-	-	21	959
VP 1121/N2	285	1x125	2x125	10	12	591	-	-	39	690	60	690	750	-	-	-	-	-	-	21	967
VP 1123/N2	285	1x125	2x125	10	12	675	-	-	45	800	80	760	865	-	-	-	-	-	-	24	1158

**Работни характеристики**



**Забележки**

- $Q_v$  = дебит
- $C$  = скорост
- $P_d$  = динамично налягане
- $P_t$  = пълен напор
- $L_p$  = шумово ниво
- $P_a$  = мощност на двигателя
- Пунктираната линия (- - - -) е характеристика на оборотите на директно куплиран двигател